

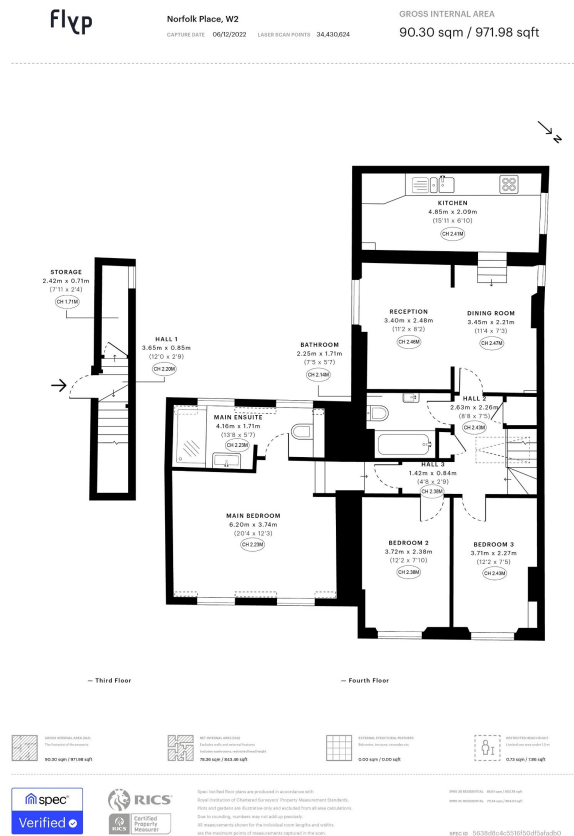
Norfolk Place, Hyde Park Estate, W2

£1,050,000

3 2 1



- Sleek Modern Kitchen
- Wooden Slat Panel
- 3 Spacious Bedrooms
- Numerous Windows for Natural Light
- Short Walk to Hyde Park
- Ensuite
- Leasehold
- Large Main Bathroom
- Short Walk to Paddington Station
-



Welcome to this exquisite 3 bed, 2 bath flat, spanning 941 square feet, perfectly situated right next to Hyde Park and Paddington Station, offering an unparalleled combination of greenery, convenience, and urban excitement. This exceptional residence promises a modern lifestyle with its thoughtful design and prime location.