




Grange Road SE1

£3,683PCM (Deposit: £4,249)

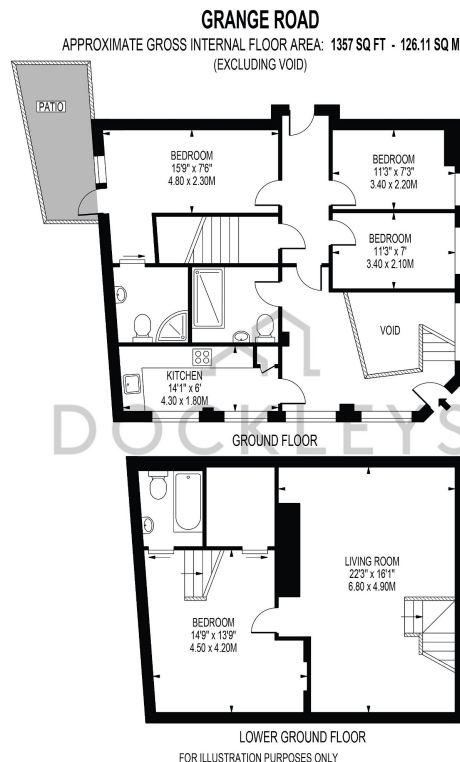
 3  3  2



Tax Band: D

Furnished: Furnished

- 3 Bedrooms
- 2 Reception Rooms
- 3 Bathrooms (One En Suite)
- Study Room
- Split Level Apartment
-
-
-



FOR ILLUSTRATION PURPOSES ONLY
 THIS FLOOR PLAN SHOULD BE USED AS A GENERAL OUTLINE FOR GUIDANCE ONLY AND DOES NOT CONSTITUTE IN WHOLE OR IN PART AN OFFER OR CONTRACT.
 ANY INTENDING PURCHASER OR LESSEE SHOULD SATISFY THEMSELVES BY INSPECTION, SURVEYORS' DRAWINGS AND FULL SURVEY AS TO THE CORRECTNESS OF EACH STATEMENT.
 ANY AREAS, MEASUREMENTS OR DISTANCES QUOTED ARE APPROXIMATE AND SHOULD NOT BE USED TO VALUE A PROPERTY OR BE THE BASIS OF ANY SALE OR LET.

A lovely stylish and spacious duplex flat in the heart of Bermondsey offering a perfect blend of contemporary living and urban convenience is available to rent. This stunning 3-bedroom, 3-bathroom residence boasts two reception rooms that create a harmonious balance of comfort and sophistication. The property is set over two floors and is bursting with character. Great transport links and is close to an array of local restaurants and amenities.