

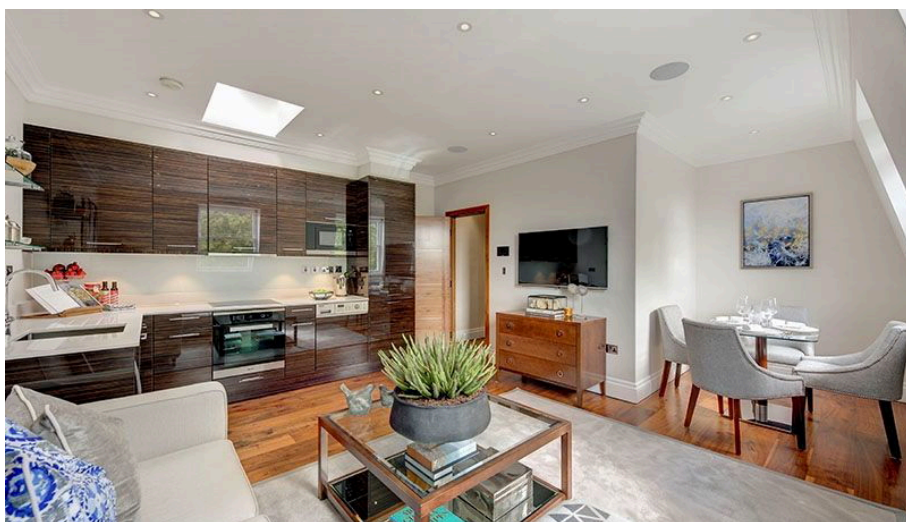


Loporto Browne
— RESIDENTIAL —

Garden House, Kensington Gardens Square, W2

£1,297PW (Deposit: £6,485)

🛏️ 2 🚿 2 🛋️ 1



- Elegant and Spacious 2 Bedroom Apartment
- 2 Modern Bathrooms
- Unique Private Access to Kensington Garden Square Gardens
- Grade II Listed Building
- Dedicated Building Manager and 24 Hour Security
- Stunning Communal Gardens
- Lift Access
- 722 Sq Ft

Tax Band: Furnished: Furnished

This superbly refurbished 2 bedrooms, 2 bathroom apartment is set within a stunning Grade II listed building with access to beautiful communal gardens.

